



# Bachelor of Information Technology

✔ Learn from the best when you study at JCU with expert IT staff who have practical industry experience, along with up-to-the-minute technical knowledge. You'll benefit from their ability to share their knowledge and experience.

✔ Combine the knowledge and technical skills that are essential when you're ready to make a start in your professional IT career through learning about a broad range of IT branches, from Cyber-Security to Data Science to Design Thinking.

## COURSE DETAILS:

Locations: Cairns, Mackay, Townsville, Queensland  
Bachelors: Bachelor of Information Technology  
Units: 110.2 (e)46., 110.2 (f)47., 110.2 (g)48., 110.2 (h)49., 110.2 (i)50., 110.2 (j)51., 110.2 (k)52., 110.2 (l)53., 110.2 (m)54., 110.2 (n)55., 110.2 (o)56., 110.2 (p)57., 110.2 (q)58., 110.2 (r)59., 110.2 (s)60., 110.2 (t)61., 110.2 (u)62., 110.2 (v)63., 110.2 (w)64., 110.2 (x)65., 110.2 (y)66., 110.2 (z)67., 110.2 (aa)68., 110.2 (ab)69., 110.2 (ac)70., 110.2 (ad)71., 110.2 (ae)72., 110.2 (af)73., 110.2 (ag)74., 110.2 (ah)75., 110.2 (ai)76., 110.2 (aj)77., 110.2 (ak)78., 110.2 (al)79., 110.2 (am)80., 110.2 (an)81., 110.2 (ao)82., 110.2 (ap)83., 110.2 (aq)84., 110.2 (ar)85., 110.2 (as)86., 110.2 (at)87., 110.2 (au)88., 110.2 (av)89., 110.2 (aw)90., 110.2 (ax)91., 110.2 (ay)92., 110.2 (az)93., 110.2 (ba)94., 110.2 (bb)95., 110.2 (bc)96., 110.2 (bd)97., 110.2 (be)98., 110.2 (bf)99., 110.2 (bg)100., 110.2 (bh)101., 110.2 (bi)102., 110.2 (bj)103., 110.2 (bk)104., 110.2 (bl)105., 110.2 (bm)106., 110.2 (bn)107., 110.2 (bo)108., 110.2 (bp)109., 110.2 (bq)110., 110.2 (br)111., 110.2 (bs)112., 110.2 (bt)113., 110.2 (bu)114., 110.2 (bv)115., 110.2 (bw)116., 110.2 (bx)117., 110.2 (by)118., 110.2 (bz)119., 110.2 (ca)120., 110.2 (cb)121., 110.2 (cc)122., 110.2 (cd)123., 110.2 (ce)124., 110.2 (cf)125., 110.2 (cg)126., 110.2 (ch)127., 110.2 (ci)128., 110.2 (cj)129., 110.2 (ck)130., 110.2 (cl)131., 110.2 (cm)132., 110.2 (cn)133., 110.2 (co)134., 110.2 (cp)135., 110.2 (cq)136., 110.2 (cr)137., 110.2 (cs)138., 110.2 (ct)139., 110.2 (cu)140., 110.2 (cv)141., 110.2 (cw)142., 110.2 (cx)143., 110.2 (cy)144., 110.2 (cz)145., 110.2 (da)146., 110.2 (db)147., 110.2 (dc)148., 110.2 (dd)149., 110.2 (de)150., 110.2 (df)151., 110.2 (dg)152., 110.2 (dh)153., 110.2 (di)154., 110.2 (dj)155., 110.2 (dk)156., 110.2 (dl)157., 110.2 (dm)158., 110.2 (dn)159., 110.2 (do)160., 110.2 (dp)161., 110.2 (dq)162., 110.2 (dr)163., 110.2 (ds)164., 110.2 (dt)165., 110.2 (du)166., 110.2 (dv)167., 110.2 (dw)168., 110.2 (dx)169., 110.2 (dy)170., 110.2 (dz)171., 110.2 (ea)172., 110.2 (eb)173., 110.2 (ec)174., 110.2 (ed)175., 110.2 (ee)176., 110.2 (ef)177., 110.2 (eg)178., 110.2 (eh)179., 110.2 (ei)180., 110.2 (ej)181., 110.2 (ek)182., 110.2 (el)183., 110.2 (em)184., 110.2 (en)185., 110.2 (eo)186., 110.2 (ep)187., 110.2 (eq)188., 110.2 (er)189., 110.2 (es)190., 110.2 (et)191., 110.2 (eu)192., 110.2 (ev)193., 110.2 (ew)194., 110.2 (ex)195., 110.2 (ey)196., 110.2 (ez)197., 110.2 (fa)198., 110.2 (fb)199., 110.2 (fc)200., 110.2 (fd)201., 110.2 (fe)202., 110.2 (ff)203., 110.2 (fg)204., 110.2 (fh)205., 110.2 (fi)206., 110.2 (fj)207., 110.2 (fk)208., 110.2 (fl)209., 110.2 (fm)210., 110.2 (fn)211., 110.2 (fo)212., 110.2 (fp)213., 110.2 (fq)214., 110.2 (fr)215., 110.2 (fs)216., 110.2 (ft)217., 110.2 (fu)218., 110.2 (fv)219., 110.2 (fw)220., 110.2 (fx)221., 110.2 (fy)222., 110.2 (fz)223., 110.2 (ga)224., 110.2 (gb)225., 110.2 (gc)226., 110.2 (gd)227., 110.2 (ge)228., 110.2 (gf)229., 110.2 (gg)230., 110.2 (gh)231., 110.2 (gi)232., 110.2 (gj)233., 110.2 (gk)234., 110.2 (gl)235., 110.2 (gm)236., 110.2 (gn)237., 110.2 (go)238., 110.2 (gp)239., 110.2 (gq)240., 110.2 (gr)241., 110.2 (gs)242., 110.2 (gt)243., 110.2 (gu)244., 110.2 (gv)245., 110.2 (gw)246., 110.2 (gx)247., 110.2 (gy)248., 110.2 (gz)249., 110.2 (ha)250., 110.2 (hb)251., 110.2 (hc)252., 110.2 (hd)253., 110.2 (he)254., 110.2 (hf)255., 110.2 (hg)256., 110.2 (hh)257., 110.2 (hi)258., 110.2 (hj)259., 110.2 (hk)260., 110.2 (hl)261., 110.2 (hm)262., 110.2 (hn)263., 110.2 (ho)264., 110.2 (hp)265., 110.2 (hq)266., 110.2 (hr)267., 110.2 (hs)268., 110.2 (ht)269., 110.2 (hu)270., 110.2 (hv)271., 110.2 (hw)272., 110.2 (hx)273., 110.2 (hy)274., 110.2 (hz)275., 110.2 (ia)276., 110.2 (ib)277., 110.2 (ic)278., 110.2 (id)279., 110.2 (ie)280., 110.2 (if)281., 110.2 (ig)282., 110.2 (ih)283., 110.2 (ii)284., 110.2 (ij)285., 110.2 (ik)286., 110.2 (il)287., 110.2 (im)288., 110.2 (in)289., 110.2 (io)290., 110.2 (ip)291., 110.2 (iq)292., 110.2 (ir)293., 110.2 (is)294., 110.2 (it)295., 110.2 (iu)296., 110.2 (iv)297., 110.2 (iw)298., 110.2 (ix)299., 110.2 (iy)300., 110.2 (iz)301., 110.2 (ja)302., 110.2 (jb)303., 110.2 (jc)304., 110.2 (jd)305., 110.2 (je)306., 110.2 (jf)307., 110.2 (jg)308., 110.2 (jh)309., 110.2 (ji)310., 110.2 (jj)311., 110.2 (jk)312., 110.2 (jl)313., 110.2 (jm)314., 110.2 (jn)315., 110.2 (jo)316., 110.2 (jp)317., 110.2 (jq)318., 110.2 (jr)319., 110.2 (js)320., 110.2 (jt)321., 110.2 (ju)322., 110.2 (jv)323., 110.2 (jw)324., 110.2 (jx)325., 110.2 (jy)326., 110.2 (jz)327., 110.2 (ka)328., 110.2 (kb)329., 110.2 (kc)330., 110.2 (kd)331., 110.2 (ke)332., 110.2 (kf)333., 110.2 (kg)334., 110.2 (kh)335., 110.2 (ki)336., 110.2 (kj)337., 110.2 (kk)338., 110.2 (kl)339., 110.2 (km)340., 110.2 (kn)341., 110.2 (ko)342., 110.2 (kp)343., 110.2 (kq)344., 110.2 (kr)345., 110.2 (ks)346., 110.2 (kt)347., 110.2 (ku)348., 110.2 (kv)349., 110.2 (kw)350., 110.2 (kx)351., 110.2 (ky)352., 110.2 (kz)353., 110.2 (la)354., 110.2 (lb)355., 110.2 (lc)356., 110.2 (ld)357., 110.2 (le)358., 110.2 (lf)359., 110.2 (lg)360., 110.2 (lh)361., 110.2 (li)362., 110.2 (lj)363., 110.2 (lk)364., 110.2 (ll)365., 110.2 (lm)366., 110.2 (ln)367., 110.2 (lo)368., 110.2 (lp)369., 110.2 (lq)370., 110.2 (lr)371., 110.2 (ls)372., 110.2 (lt)373., 110.2 (lu)374., 110.2 (lv)375., 110.2 (lw)376., 110.2 (lx)377., 110.2 (ly)378., 110.2 (lz)379., 110.2 (ma)380., 110.2 (mb)381., 110.2 (mc)382., 110.2 (md)383., 110.2 (me)384., 110.2 (mf)385., 110.2 (mg)386., 110.2 (mh)387., 110.2 (mi)388., 110.2 (mj)389., 110.2 (mk)390., 110.2 (ml)391., 110.2 (mm)392., 110.2 (mn)393., 110.2 (mo)394., 110.2 (mp)395., 110.2 (mq)396., 110.2 (mr)397., 110.2 (ms)398., 110.2 (mt)399., 110.2 (mu)400., 110.2 (mv)401., 110.2 (mw)402., 110.2 (mx)403., 110.2 (my)404., 110.2 (mz)405., 110.2 (na)406., 110.2 (nb)407., 110.2 (nc)408., 110.2 (nd)409., 110.2 (ne)410., 110.2 (nf)411., 110.2 (ng)412., 110.2 (nh)413., 110.2 (ni)414., 110.2 (nj)415., 110.2 (nk)416., 110.2 (nl)417., 110.2 (no)418., 110.2 (np)419., 110.2 (nq)420., 110.2 (nr)421., 110.2 (ns)422., 110.2 (nt)423., 110.2 (nu)424., 110.2 (nv)425., 110.2 (nw)426., 110.2 (nx)427., 110.2 (ny)428., 110.2 (nz)429., 110.2 (oa)430., 110.2 (ob)431., 110.2 (oc)432., 110.2 (od)433., 110.2 (oe)434., 110.2 (of)435., 110.2 (og)436., 110.2 (oh)437., 110.2 (oi)438., 110.2 (oj)439., 110.2 (ok)440., 110.2 (ol)441., 110.2 (om)442., 110.2 (on)443., 110.2 (oo)444., 110.2 (op)445., 110.2 (oq)446., 110.2 (or)447., 110.2 (os)448., 110.2 (ot)449., 110.2 (ou)450., 110.2 (ov)451., 110.2 (ow)452., 110.2 (ox)453., 110.2 (oy)454., 110.2 (oz)455., 110.2 (pa)456., 110.2 (pb)457., 110.2 (pc)458., 110.2 (pd)459., 110.2 (pe)460., 110.2 (pf)461., 110.2 (pg)462., 110.2 (ph)463., 110.2 (pi)464., 110.2 (pj)465., 110.2 (pk)466., 110.2 (pl)467., 110.2 (pm)468., 110.2 (pn)469., 110.2 (po)470., 110.2 (pp)471., 110.2 (pq)472., 110.2 (pr)473., 110.2 (ps)474., 110.2 (pt)475., 110.2 (pu)476., 110.2 (pv)477., 110.2 (pw)478., 110.2 (px)479., 110.2 (py)480., 110.2 (pz)481., 110.2 (qa)482., 110.2 (qb)483., 110.2 (qc)484., 110.2 (qd)485., 110.2 (qe)486., 110.2 (qf)487., 110.2 (qg)488., 110.2 (qh)489., 110.2 (qi)490., 110.2 (qj)491., 110.2 (qk)492., 110.2 (ql)493., 110.2 (qm)494., 110.2 (qn)495., 110.2 (qo)496., 110.2 (qp)497., 110.2 (qq)498., 110.2 (qr)499., 110.2 (qs)500., 110.2 (qt)501., 110.2 (qu)502., 110.2 (qv)503., 110.2 (qw)504., 110.2 (qx)505., 110.2 (qy)506., 110.2 (qz)507., 110.2 (ra)508., 110.2 (rb)509., 110.2 (rc)510., 110.2 (rd)511., 110.2 (re)512., 110.2 (rf)513., 110.2 (rg)514., 110.2 (rh)515., 110.2 (ri)516., 110.2 (rj)517., 110.2 (rk)518., 110.2 (rl)519., 110.2 (rm)520., 110.2 (rn)521., 110.2 (ro)522., 110.2 (rp)523., 110.2 (rq)524., 110.2 (rr)525., 110.2 (rs)526., 110.2 (rt)527., 110.2 (ru)528., 110.2 (rv)529., 110.2 (rw)530., 110.2 (rx)531., 110.2 (ry)532., 110.2 (rz)533., 110.2 (sa)534., 110.2 (sb)535., 110.2 (sc)536., 110.2 (sd)537., 110.2 (se)538., 110.2 (sf)539., 110.2 (sg)540., 110.2 (sh)541., 110.2 (si)542., 110.2 (sj)543., 110.2 (sk)544., 110.2 (sl)545., 110.2 (sm)546., 110.2 (sn)547., 110.2 (so)548., 110.2 (sp)549., 110.2 (sq)550., 110.2 (sr)551., 110.2 (ss)552., 110.2 (st)553., 110.2 (su)554., 110.2 (sv)555., 110.2 (sw)556., 110.2 (sx)557., 110.2 (sy)558., 110.2 (sz)559., 110.2 (ta)560., 110.2 (tb)561., 110.2 (tc)562., 110.2 (td)563., 110.2 (te)564., 110.2 (tf)565., 110.2 (tg)566., 110.2 (th)567., 110.2 (ti)568., 110.2 (tj)569., 110.2 (tk)570., 110.2 (tl)571., 110.2 (tm)572., 110.2 (tn)573., 110.2 (to)574., 110.2 (tp)575., 110.2 (tq)576., 110.2 (tr)577., 110.2 (ts)578., 110.2 (tt)579., 110.2 (tu)580., 110.2 (tv)581., 110.2 (tw)582., 110.2 (tx)583., 110.2 (ty)584., 110.2 (tz)585., 110.2 (ua)586., 110.2 (ub)587., 110.2 (uc)588., 110.2 (ud)589., 110.2 (ue)590., 110.2 (uf)591., 110.2 (ug)592., 110.2 (uh)593., 110.2 (ui)594., 110.2 (uj)595., 110.2 (uk)596., 110.2 (ul)597., 110.2 (um)598., 110.2 (un)599., 110.2 (uo)600., 110.2 (up)601., 110.2 (uq)602., 110.2 (ur)603., 110.2 (us)604., 110.2 (ut)605., 110.2 (uu)606., 110.2 (uv)607., 110.2 (uw)608., 110.2 (ux)609., 110.2 (uy)610., 110.2 (uz)611., 110.2 (va)612., 110.2 (vb)613., 110.2 (vc)614., 110.2 (vd)615., 110.2 (ve)616., 110.2 (vf)617., 110.2 (vg)618., 110.2 (vh)619., 110.2 (vi)620., 110.2 (vj)621., 110.2 (vk)622., 110.2 (vl)623., 110.2 (vm)624., 110.2 (vn)625., 110.2 (vo)626., 110.2 (vp)627., 110.2 (vq)628., 110.2 (vr)629., 110.2 (vs)630., 110.2 (vt)631., 110.2 (vu)632., 110.2 (vv)633., 110.2 (vw)634., 110.2 (vx)635., 110.2 (vy)636., 110.2 (vz)637., 110.2 (wa)638., 110.2 (wb)639., 110.2 (wc)640., 110.2 (wd)641., 110.2 (we)642., 110.2 (wf)643., 110.2 (wg)644., 110.2 (wh)645., 110.2 (wi)646., 110.2 (wj)647., 110.2 (wk)648., 110.2 (wl)649., 110.2 (wm)650., 110.2 (wn)651., 110.2 (wo)652., 110.2 (wp)653., 110.2 (wq)654., 110.2 (wr)655., 110.2 (ws)656., 110.2 (wt)657., 110.2 (wu)658., 110.2 (wv)659., 110.2 (ww)660., 110.2 (wx)661., 110.2 (wy)662., 110.2 (wz)663., 110.2 (xa)664., 110.2 (xb)665., 110.2 (xc)666., 110.2 (xd)667., 110.2 (xe)668., 110.2 (xf)669., 110.2 (xg)670., 110.2 (xh)671., 110.2 (xi)672., 110.2 (xj)673., 110.2 (xk)674., 110.2 (xl)675., 110.2 (xm)676., 110.2 (xn)677., 110.2 (xo)678., 110.2 (xp)679., 110.2 (xq)680., 110.2 (xr)681., 110.2 (xs)682., 110.2 (xt)683., 110.2 (xu)684., 110.2 (xv)685., 110.2 (xw)686., 110.2 (xx)687., 110.2 (xy)688., 110.2 (xz)689., 110.2 (ya)690., 110.2 (yb)691., 110.2 (yc)692., 110.2 (yd)693., 110.2 (ye)694., 110.2 (yf)695., 110.2 (yg)696., 110.2 (yh)697., 110.2 (yi)698., 110.2 (yj)699., 110.2 (yk)700., 110.2 (yl)701., 110.2 (ym)702., 110.2 (yn)703., 110.2 (yo)704., 110.2 (yp)705., 110.2 (yq)706., 110.2 (yr)707., 110.2 (ys)708., 110.2 (yt)709., 110.2 (yu)710., 110.2 (yv)711., 110.2 (yw)712., 110.2 (yx)713., 110.2 (yy)714., 110.2 (yz)715., 110.2 (za)716., 110.2 (zb)717., 110.2 (zc)718., 110.2 (zd)719., 110.2 (ze)720., 110.2 (zf)721., 110.2 (zg)722., 110.2 (zh)723., 110.2 (zi)724., 110.2 (zj)725., 110.2 (zk)726., 110.2 (zl)727., 110.2 (zm)728., 110.2 (zn)729., 110.2 (zo)730., 110.2 (zp)731., 110.2 (zq)732., 110.2 (zr)733., 110.2 (zs)734., 110.2 (zt)735., 110.2 (zu)736., 110.2 (zv)737., 110.2 (zw)738., 110.2 (zx)739., 110.2 (zy)740., 110.2 (zz)741.

# E b a

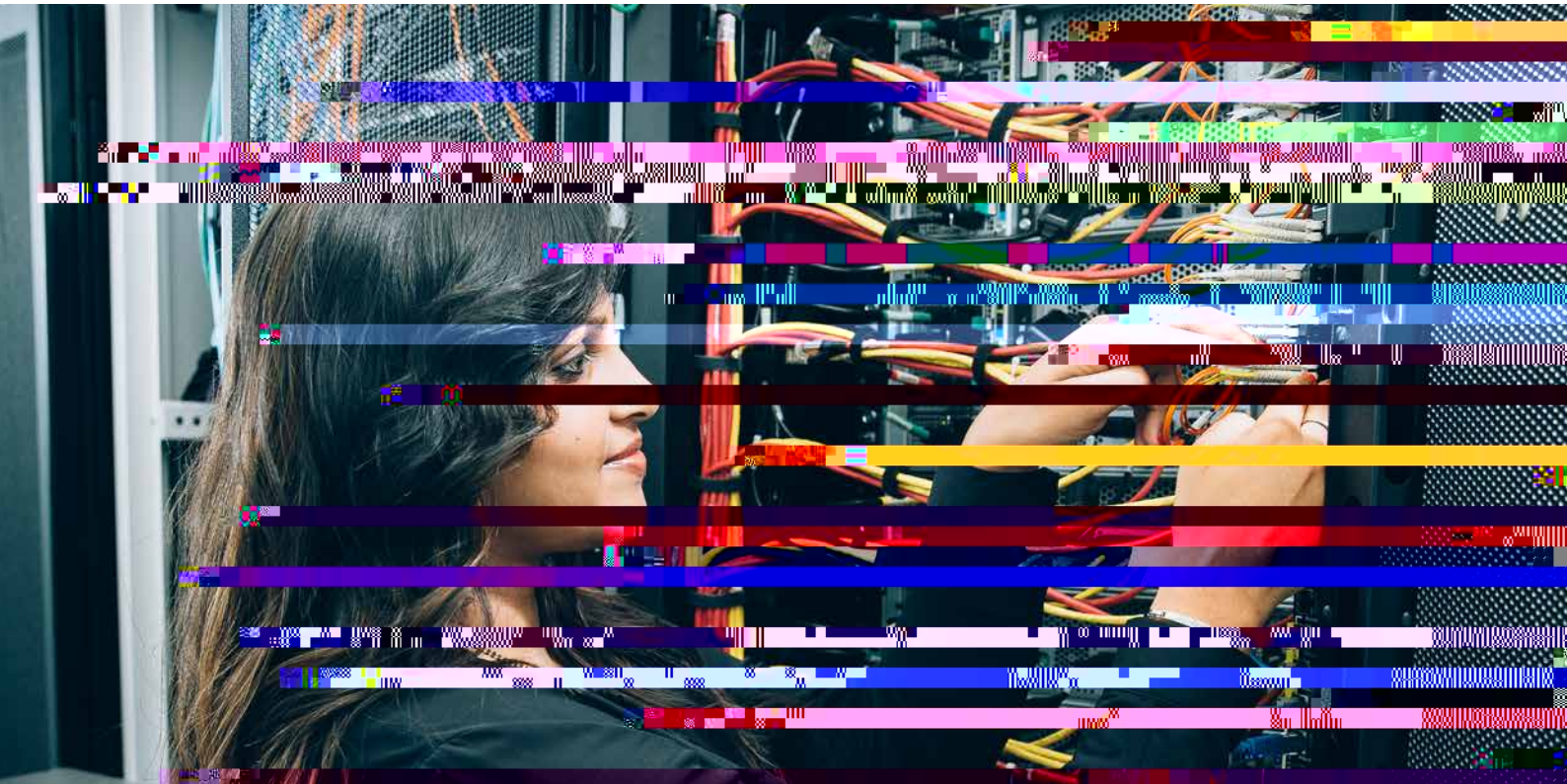
Microsoft? Amazon? Google? IBM? Your own technology business? Are those the jobs you're dreaming of?

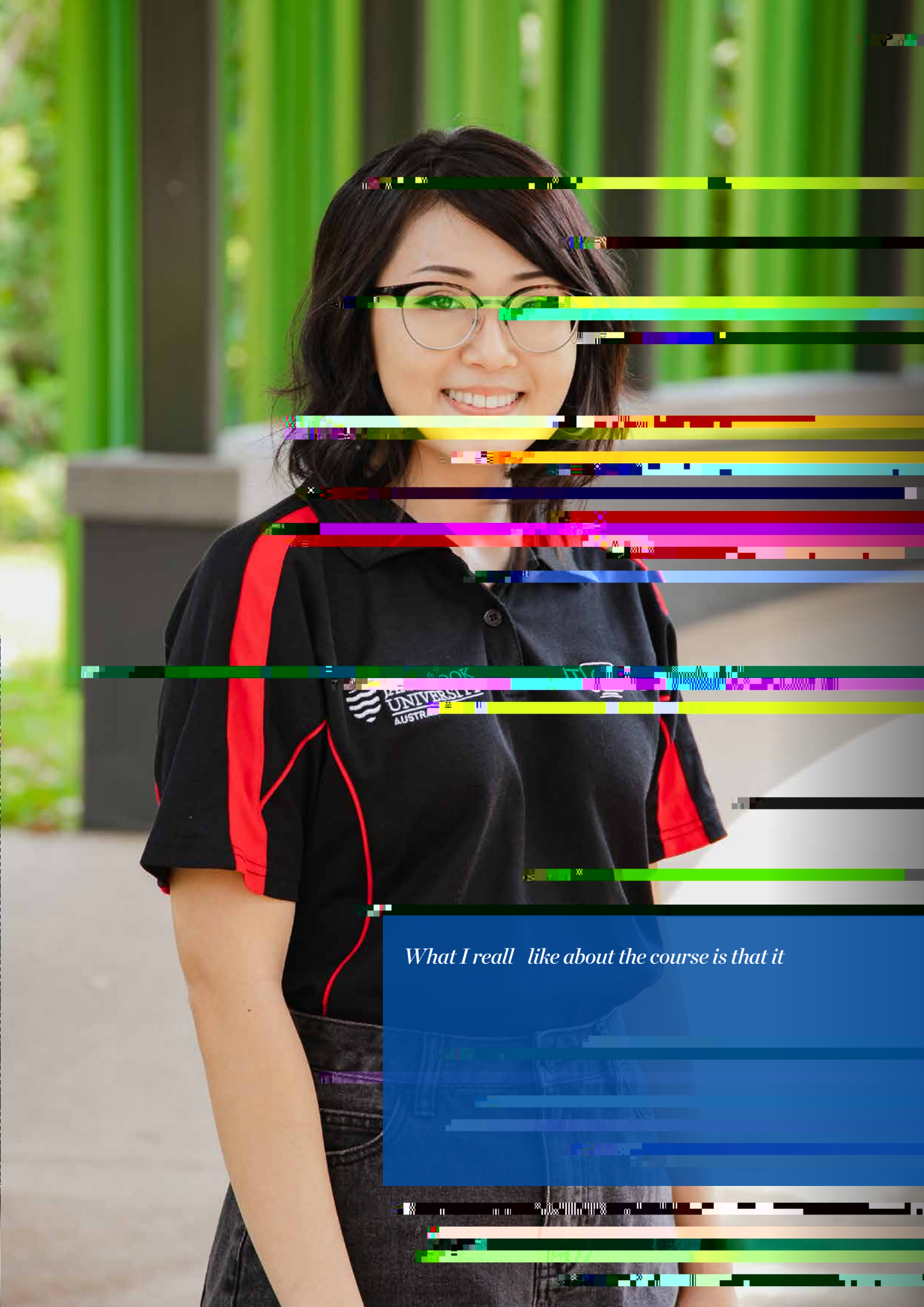
JCU graduates are working in all of these areas, and in many other technology roles, too.

JCU offers real-world experience with projects in companies leading the way in information technology solutions. You could work in industry placement positions or design projects based on workplace situations.

Throughout your degree, build your resume and enhance your professional connections. As you work toward your information technology degree, you will gain confidence in your abilities, and see how your skills complement those of your teammates.

Whether you want to start your own business, sign on with a





*What I really like about the course is that it*



# Ca

When you graduate, you'll be ready to start contributing to multinational corporations, government departments, SMEs – or your own business.

You could be an IT project manager, network administrator, designer, systems analyst, software developer, games designer/tester/reviewer, simulation designer, enterprise architect, consultant, story boarder, web



# JCU A a

Study and live in some of the most interesting places in the world. Cairns and Townsville are on the doorstep of the Great Barrier Reef, magnificent rainforests, the savannah region and Outback Australia.

Living on-campus is a great way to make the most of your time at JCU. JCU Townsville, Bebegu Yumba campus, Douglas, has five different accommodation options housing over 1,300 students. JCU Cairns, Nguma-bada campus, Smithfield, features an accommodation complex for 300 students. Living on-campus is a great place to make new friends and immerse yourself in the JCU culture. All rooms at our on-campus residences are single board, with a single bed, study desk, chair, fan, air-conditioning and Wi-Fi. Each residence is different in regards to style of living, culture and atmosphere. There are options for fully catered or self-catered housing. Find out more at [jcu.edu.au/accommodation](https://www.jcu.edu.au/accommodation)

